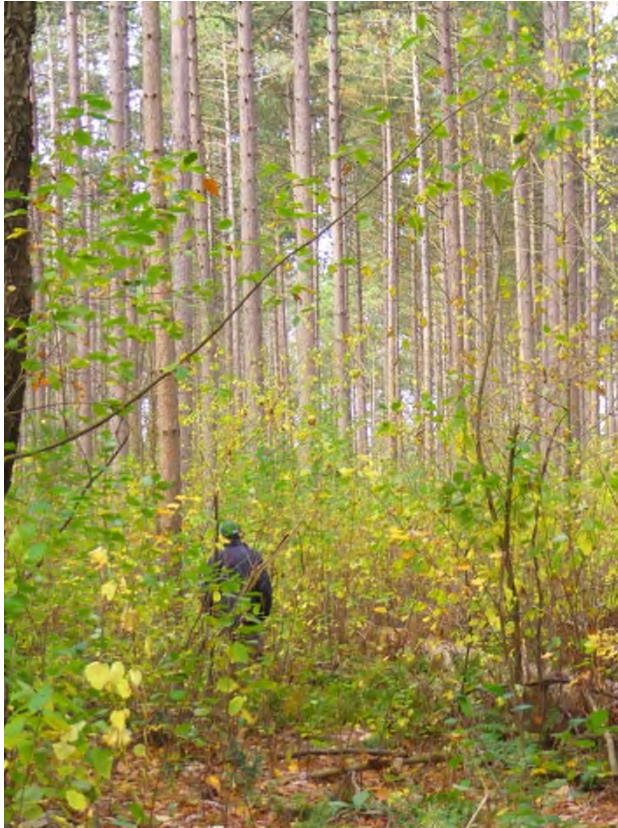


LEEDS & GRENVILLE INVASIVE PLANT MANAGEMENT STRATEGY



Forestry Invasive Plants

Glossy Buckthorn



Dog Strangling Vine (DSV)



Forestry Strategies

BUCKTHORN STRATEGIES

- * Control in New Plantation until Free to Grow
- * Control Road Side Brush
- * Trial Pre-Thinning Buckthorn Control

DSV STRATEGY

- * Eradicate

BUCKTHORN CONTROL in Plantations



LIMERICK
FOREST
LEEDS & GRENVILLE'S COMMUNITY FOREST

Leeds
Grenville

BUCKTHORN CONTROL in Plantations



LIMERICK
FOREST
LEEDS & GRENVILLE'S COMMUNITY FOREST

Leeds
Grenville

BUCKTHORN CONTROL in Plantations



BUCKTHORN CONTROL

Roadside

Mowing

Brush saw

Stump spraying



BUCKTHORN CONTROL Trial



LIMERICK
FOREST
LEEDS & GRENVILLE'S COMMUNITY FOREST

Leeds
Grenville

BUCKTHORN CONTROL Trial



LIMERICK
FOREST
LEEDS & GRENVILLE'S COMMUNITY FOREST

Leeds
Grenville

BUCKTHORN TENDING TRIAL

Trial



September 12, 2017



LIMERICK
FOREST
LEEDS & GRENVILLE'S COMMUNITY FOREST

Leeds
Grenville

BUCKTHORN TENDING TRIAL

Trial



October 2, 2017



**LIMERICK
FOREST**
LEEDS & GRENVILLE'S COMMUNITY FOREST

**Leeds
Grenville**

BUCKTHORN TENDING TRIAL

Trial



BUCKTHORN CONTROL Trial

Basal Bark
Application the
following year to
taller trees

Thinning and
Planting to follow



LEEDS & GRENVILLE VEGETATION MANAGEMENT PROGRAM



WILD PARSNIP

WILD PARSNIP

- Short-lived perennial, native to Europe & Asia
- 2 or more years to mature and seed
- > 1m in height
- If cut too early, it can re-sprout and produce seed
- Very invasive
 - outcompetes native vegetation
- Contains toxic compounds
 - severe allergic reaction



VEGETATION MANAGEMENT PROGRAM

Mowing Alone Not Working

- Most completed after seed dispersal – just spreads weed seeds
- Doesn't kill weeds - they just re-sprout
- Wild Parsnip rapidly spreads along roadsides



WILD PARSNIP

Spot Spraying

- Weed Inspector ordered spot spraying
- Control only small patches near complainants
- Reactionary - not addressing the problem



WILD PARSNIP CONTROL PROGRAM

Initial Steps

- **Weed Audit 2012**
- **Wild Parsnip & DSV Management Research Project 2013**
 - **Researched existing practices and studies**
 - **Created Test plots**



WILD PARSNIP CONTROL PROGRAM

Literature Search of Control Options

- Alternative Herbicides, Steam, Mulching, Manual, Mowing, Biological, Herbicides
- Found Herbicides most effective for large area control

Wild Parsnip Control Test Plots

- Mowing, No-Mowing, Clearview herbicide
- Confirmed Herbicide most effective



WILD PARSNIP CONTROL PROGRAM

2014 Trial Roadside Spray

- Monitoring found the spray very effective
- Program expanded to rest of Counties
- Townships invited to participate



WILD PARSNIP CONTROL PROGRAM

2015 – 2019 Roadside Spraying

- Completed 1 300 to 1 900 lane km of County Roads and Township Roads annually



WILD PARSNIP CONTROL PROGRAM

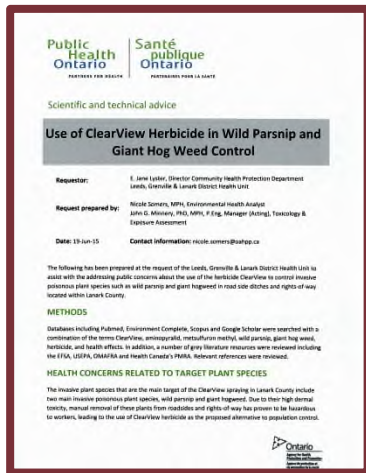
Roadside Spray Operation

- Contracted with a spray company
- County inspector in pilot vehicle in front of spray truck (monitor compliance, talk to pedestrian and watch for buffer zones or no-spray signs)
- completed mid May to late June



Clearview

Human Health Safety



- Health Canada approved under the PMRA
- Not toxic to human or animals – no grazing restrictions
- Public Health Ontario report– no concern with use of herbicide but concerned about risks of Wild Parsnip.

Clearview

Pollinator Safety



- **PMRA - practically non toxic is the safest possible category**
- **Does not kill milkweed – Monarch Butterfly habitat**



Clearview Demonstration



Sprayed every other year



Never been sprayed

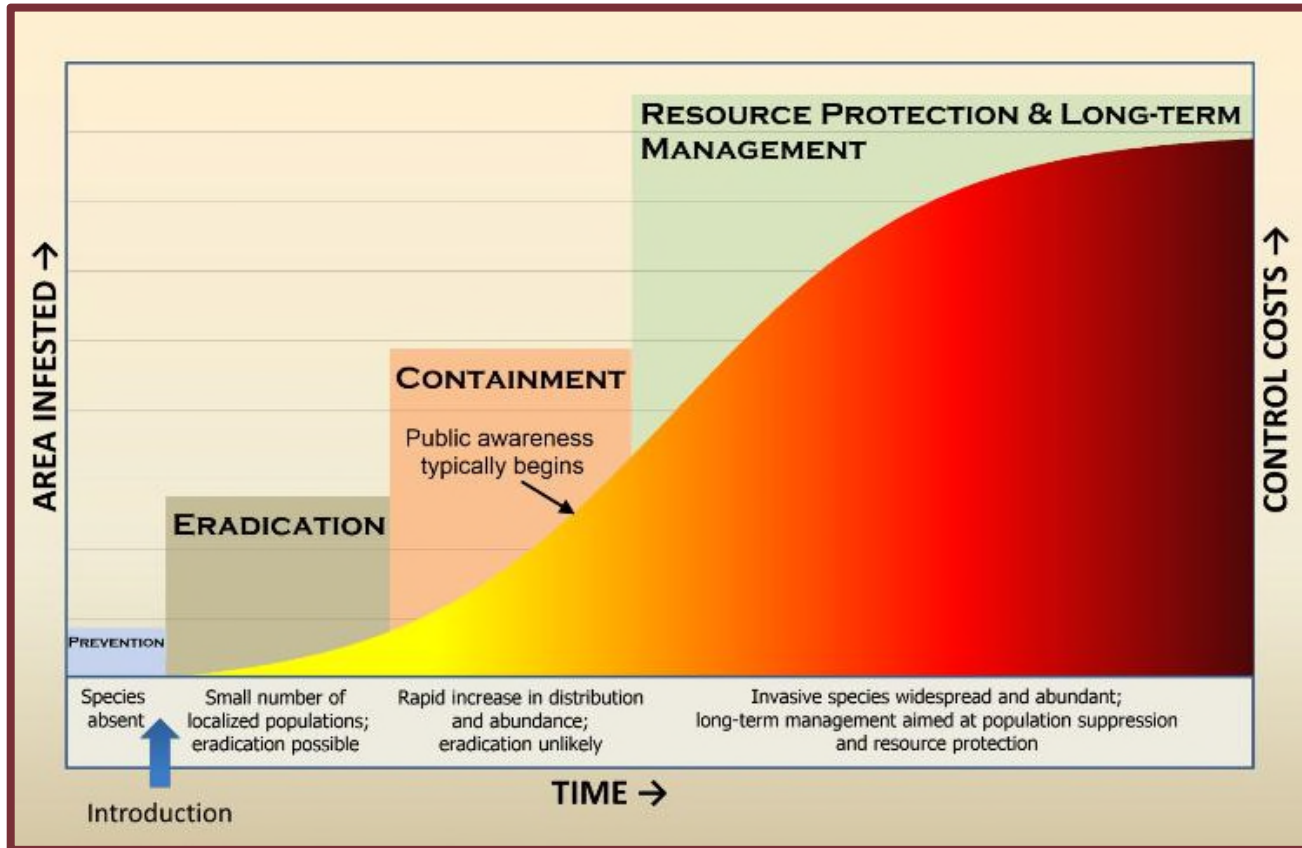
Plans and Strategies

Integrated Vegetation Management Plan

- **Goals, Monitoring, Prevention**
- **Control options for specific species**
- **Both chemical and non chemical options**

INVASIVES

Early Detection and Eradication

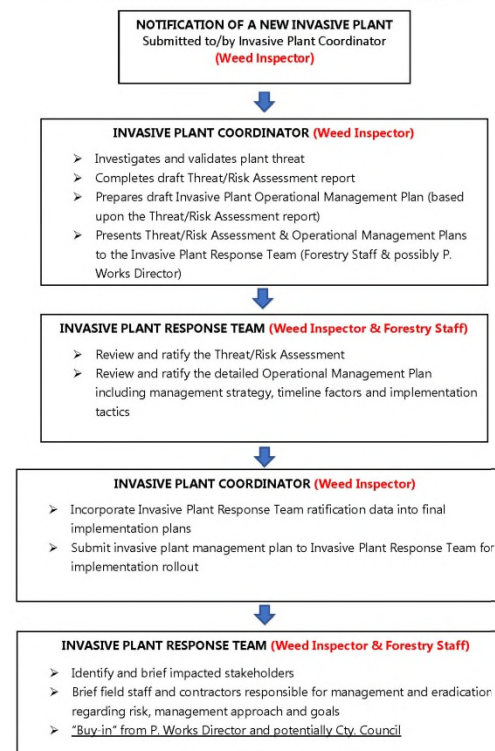


Plans and Strategies

Invasive Plant Management Plan

- For new invasives
- Risk assesment
- Personnel

NEW INVASIVE PLANT THREAT - MANAGEMENT PROCESS



Networking

- **Regional Forest Health Network**
- **Provincial Forest Health Updates**
- **Ontario Vegetation Management Association**
- **Ontario Invasive Plant Council**
- **Ontario Weed Inspector Conference**

PHRAGMITES

Phragmites

- Invasive perennial grass from Europe & Asia
- Up to 15 m in height
- Prefer wet sites but can grow anywhere
- Reproduce from rhizomes and root stolons
- Moved by road maintenance equipment
- Effect
 - Biodiversity and habitat
 - Drainage
 - Road sight-line
 - Economic and social impacts



JAPANESE KNOTWEED

Japanese Knotweed

- Invasive perennial herbaceous plant from Asia
- Bamboo-like clumps up to 3m in height
- Can grow in variety of sites
- Reproduce from rhizomes
- Extensive roots to 2m depth makes it hard to control
- Effect
 - Biodiversity and habitat
 - Damage to infrastructure
 - Grows through asphalt, and concrete



Thank You,

Rob Ross

rob.ross@uclg.on.ca

(613) 342-3840 ext 2417