



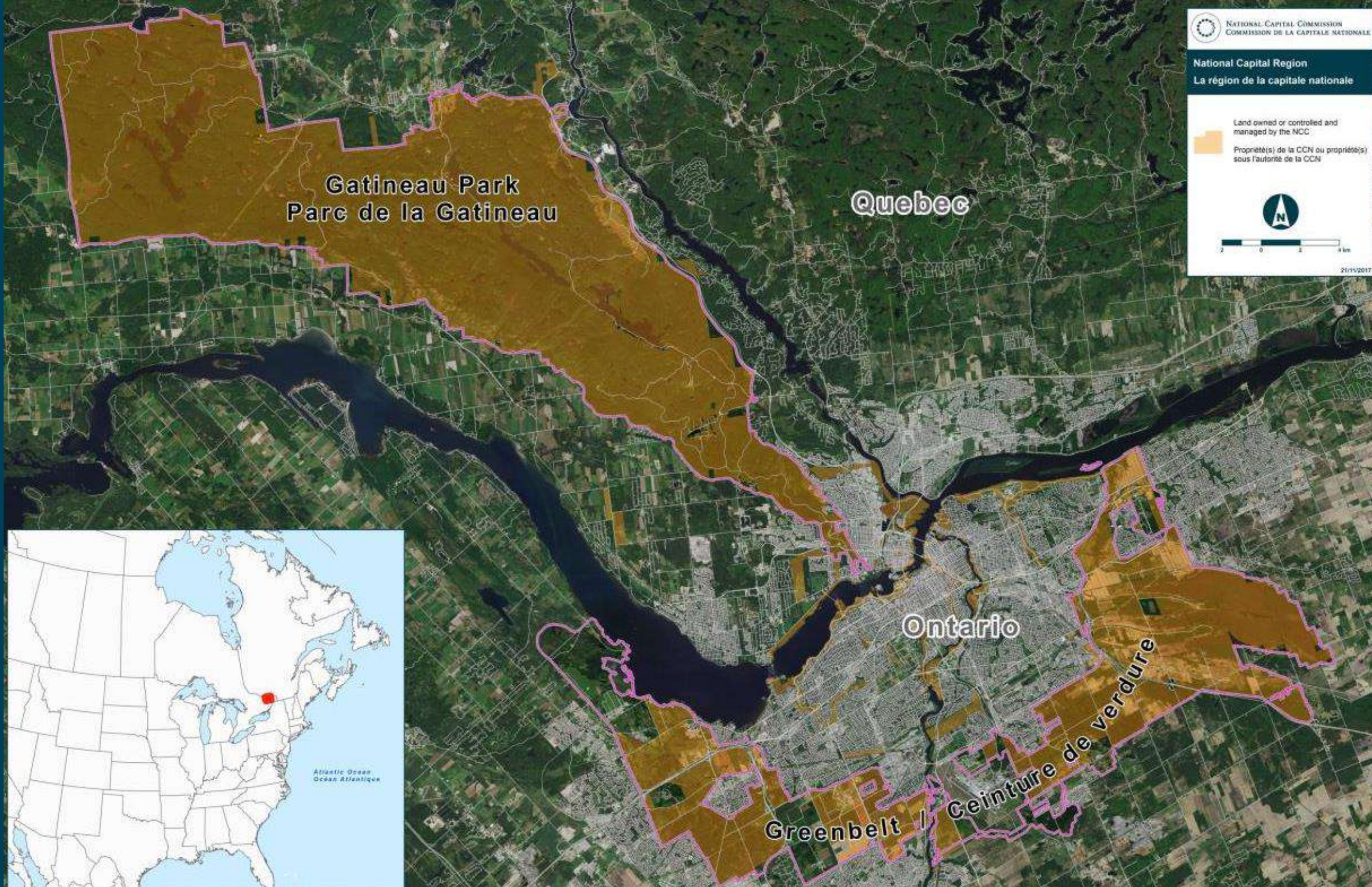
NATIONAL CAPITAL COMMISSION
COMMISSION DE LA CAPITALE NATIONALE

Sustainable Development Strategy 2018–2023

Geneviève Mercier

Senior Environmental Strategy and Programs Officer

December 12, 2018







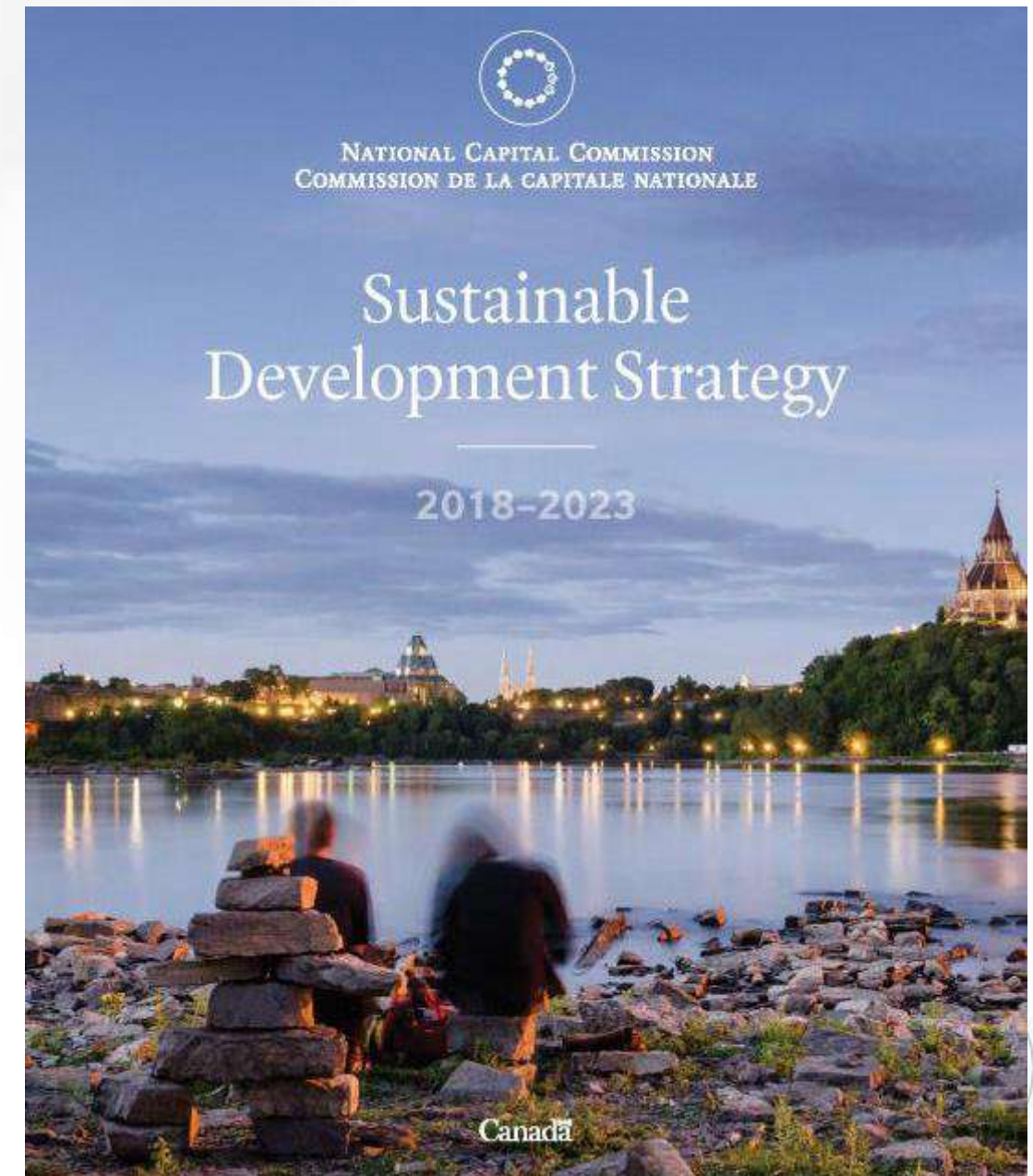


FRAISES



Sustainable Development Strategy 2018–2023

- Approved in September 2018
- Strategy co-drafted with:
 - 148 NCC staff
 - 30 regional stakeholders
 - 650 members of the general public



Vision

We protect our precious legacy, the natural and cultural heritage of the National Capital Region. We work with community partners for a green and inclusive region. We value the health and well-being of all residents and visitors. We take action on climate change, build resilient infrastructure, protect natural capital, promote sustainable agriculture and safe communities, and connect Canadians with nature.





NCC
CCN

Sustainable Development Strategy 2018–2023

2

focus areas



6

principles



10

aspirational
long-term goals



36

actions



76

indicators



2

focus areas



- Partnerships for regional sustainability
- Improving the built environment for human health

6

principles

- Transparency and Accountability
- Leadership
- Public Participation
- Natural Capital in decision making
- Collaboration
- Social Equity



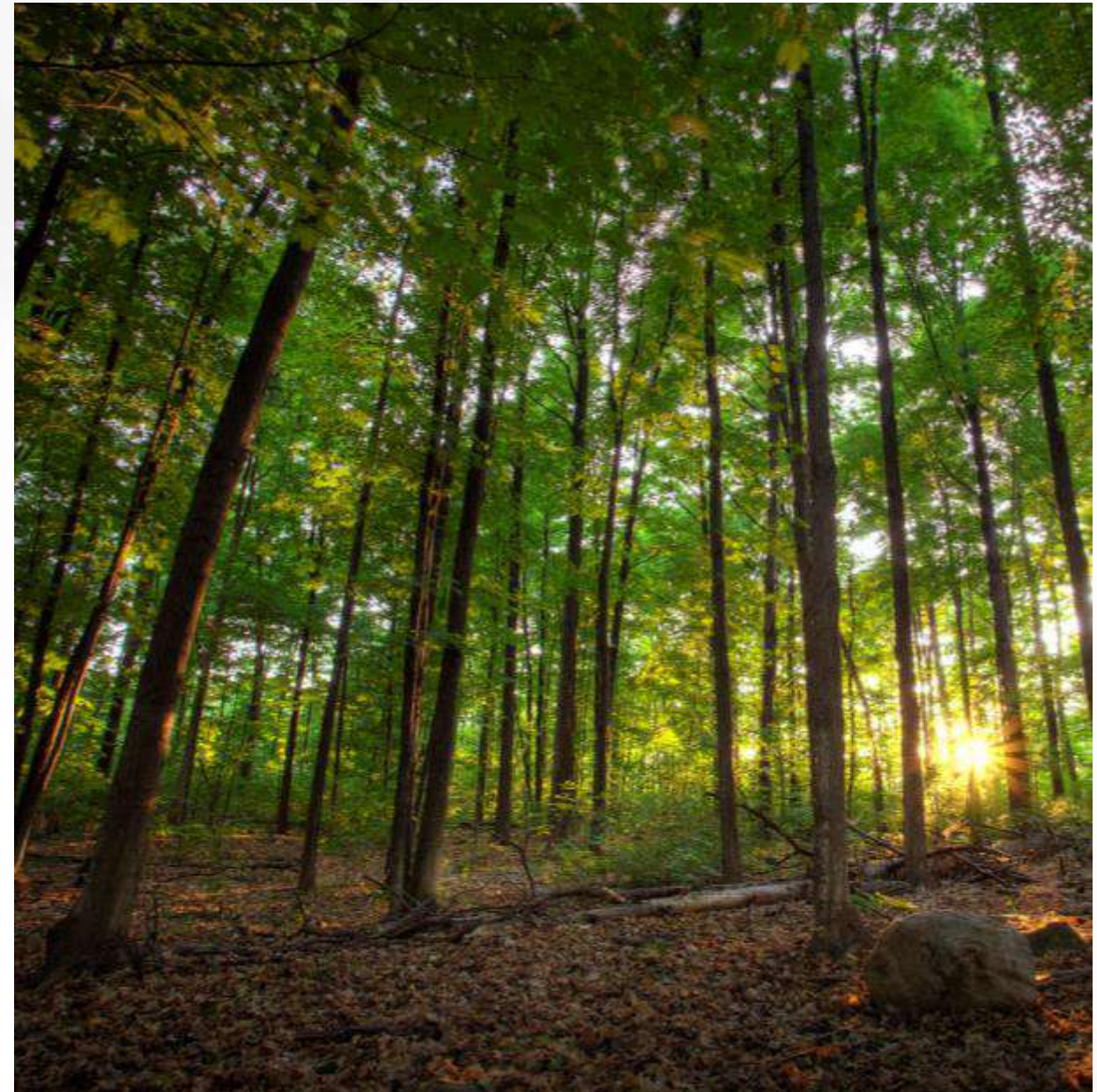
10

aspirational long-term goals

1. Effective action on climate change
2. Low-carbon government
3. Modern and resilient infrastructure
4. Clean energy
5. Pristine lakes and rivers
6. Sustainably managed lands and forests
7. Healthy wildlife populations
8. Sustainable food
9. Connecting Canadians with nature
10. Safe and healthy communities

Sustainably managed lands and forests

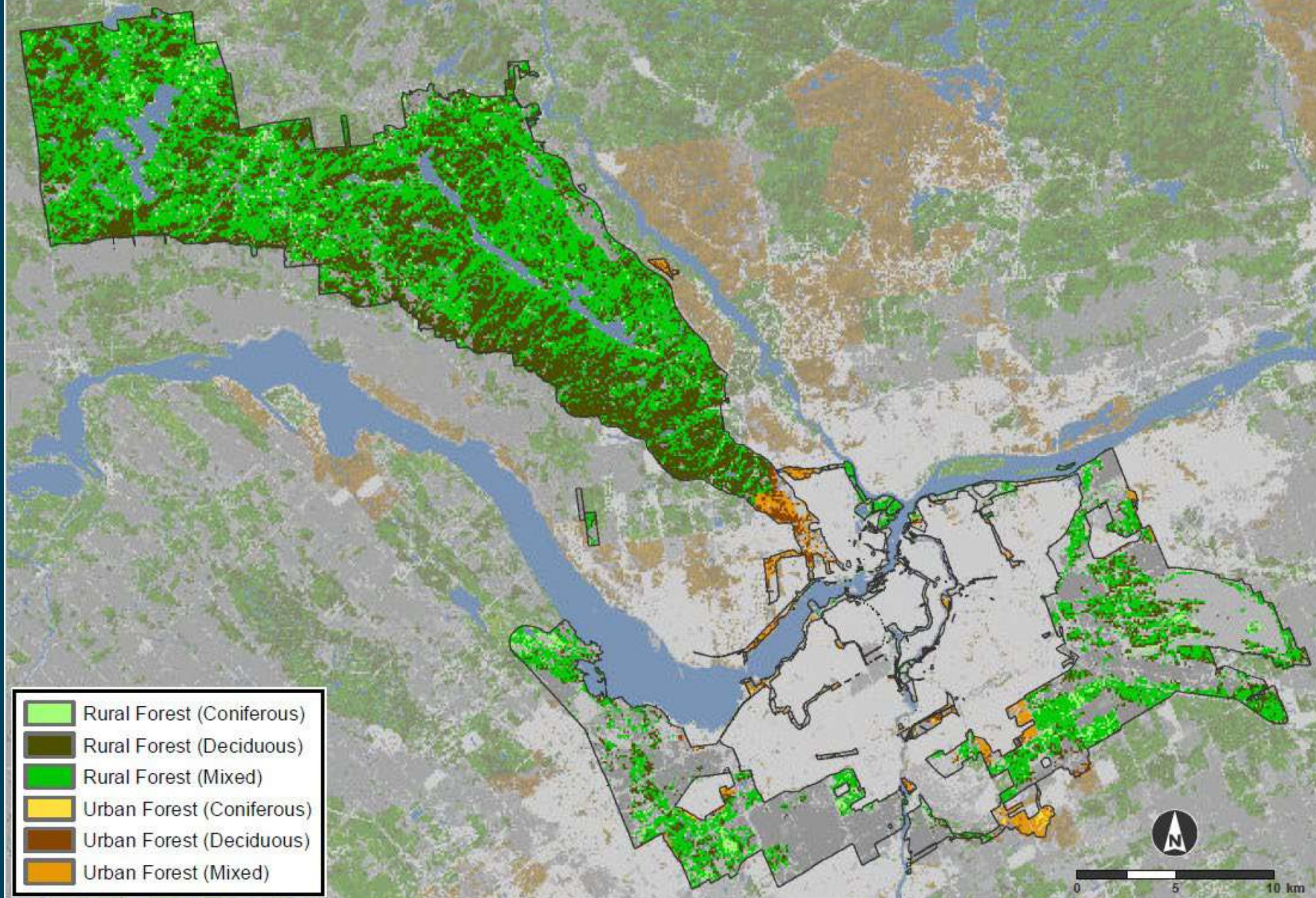
- Adopt a forest strategy
- Control the spread of invasive plant species
- Promote the connectivity of ecosystems and natural habitats in the National Capital Region
- Renew the Corporate Natural Resources Action Plan



Importance of trees

- Recognizes the value of trees in improving air quality, water quality and mitigating the effects of climate change through storage and sequestration of carbon
- Understands the positive impact of vegetation cover in relation to physical and mental health of citizens





LOCATION OF VALUED ECOSYSTEMS ON NCC TERRITORY



REPRESENTATIVE SECTORS

GATINEAU PARK

- PG E1 La Pêche Lake
- PG E2 Eardley Plateau
- PG E3 Eardley Escarpment
- PG E4 Pink Lake Plateau
- PG H5 Folly Bog
- PG H6 Fées Lake
- PG E7 Mosch Lake
- PG E8 Philippe Lake

GREENBELT

- CV E1 Shirleys Bay, Connaught Sector
- CV E2 Stony Swamp
- CV E3 Mer Bleue Bog
- CV H4 Chapel Hill North Forest
- CV H5 Green's Creek
- CV H6 Pine Grove Forest
- CV H7 Shirleys Bay, Crystal Bay Sector
- CV H8 Pinhey Forest
- CV H9 Black Rapids Creek

URBAN LANDS

- TU H1 Leamy Lake
- TU H2 Champlain Corridor
- TU H3 Voyageurs Corridor
- TU H4 Mud Lake
- TU H5 Lemieux and Champlain Bridge Islands
- TU H6 Rockcliffe Park
- TU H7 Airbase Woods
- TU H8 Rideau River, Hogsback
- TU H9 McCarthy Woods
- TU H10 Carlington Woods
- TU H11 Philémon Wright Corridor

Figure 1

SOURCES

Geographical information from National Capital Commission databases.



Projection MTM, Zone 9, NAD 83.

Current tree policy

- Management recommendations for natural habitats and high valued ecosystems
- Urban Lands Master Plan
 - Tree protection and compensation measures



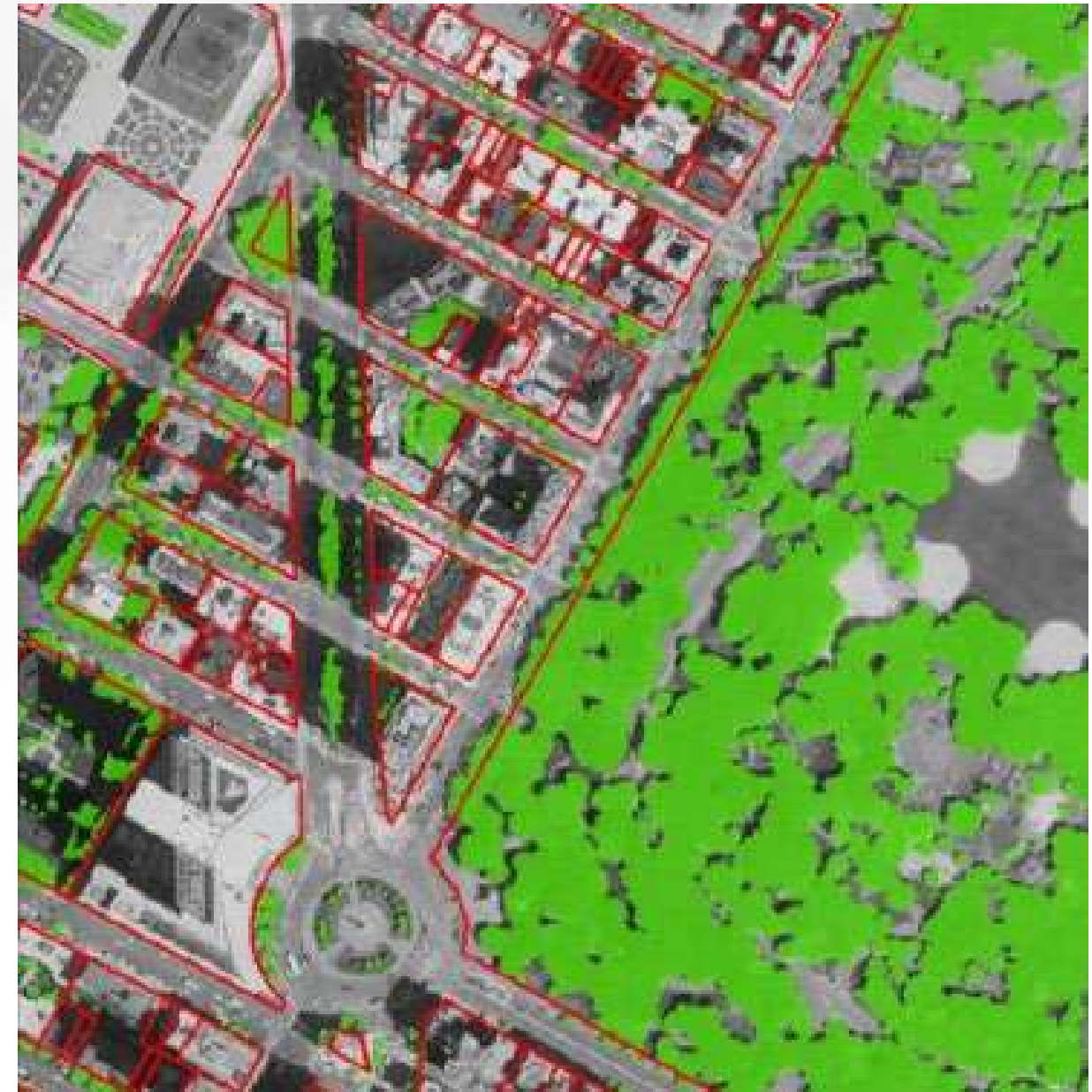
Forest Strategy for NCC lands

- To be adopted by 2019–2020
- Considers natural and cultural heritage values
- Focuses on urban tree protection
- 100,000 trees to be planted



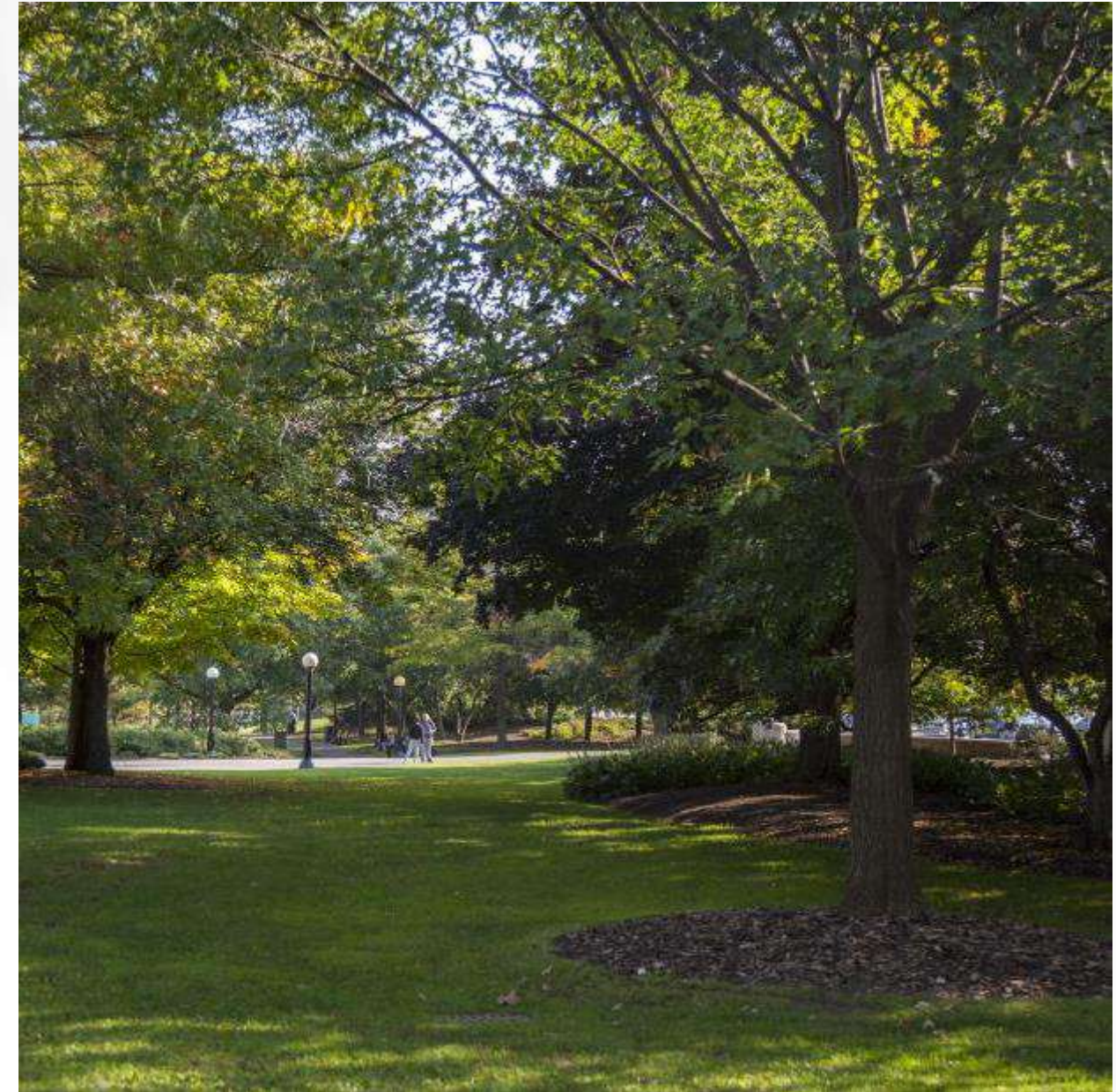
Tree canopy assessment

- In partnership with the City of Ottawa and Ville de Gatineau
- Working with the Spatial Analysis Laboratory, University of Vermont
- Automated and manual extraction using LiDAR data and high resolution imagery



Natural capital and social equity

- Economic value of the services provided by:
 - Urban forests (\$9,352) and rural forests (\$4,193)
- Social equity:
 - Socio-economic and health data to prioritize planting areas



Next steps

- Draft the forest strategy (2019)
- Get your input and work in collaboration with regional partners
- Event at NCC Urbanism Lab (April 2019)
- Continue to protect trees and regional forests



Web Links

- [Sustainable Development Strategy 2018–2023](#)
- [Natural Capital: The Economic Value of the National Capital Commission's Green Network](#)



