

BUCKTHORN CONTROL

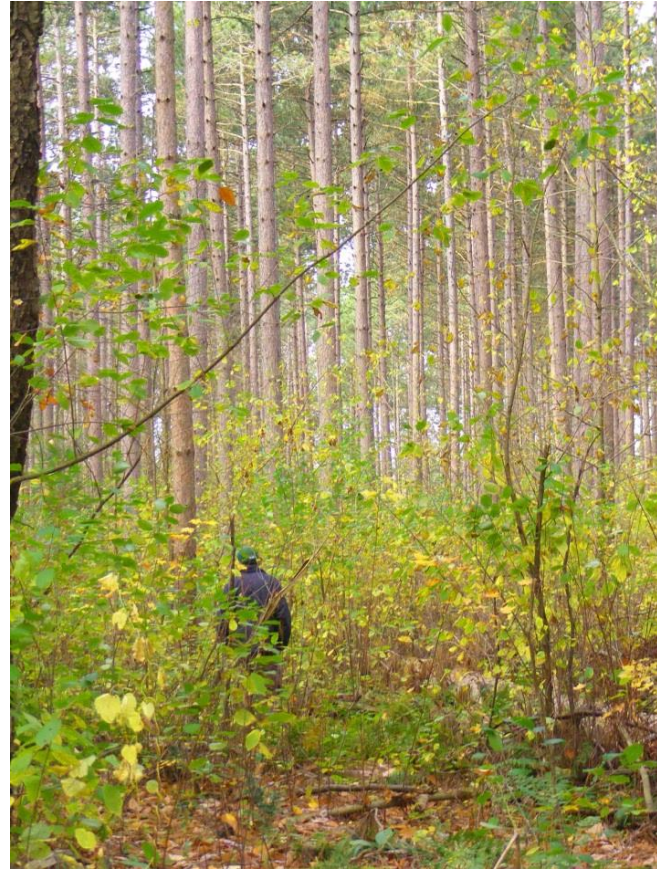


BUCKTHORN CONTROL

Moderate Infestation



Gets worse after thinning



BUCKTHORN CONTROL

STRATEGIES

- * Control in New Plantation until Free to Grow
- * Control Road Side Brush
- * Trial Pre-Thinning Buckthorn Control

All Involve Herbicide Treatment

BUCKTHORN CONTROL

Pesticide Legislation:

Pesticides Act & Ontario Regulation 63/09

Ontario Ministry of the Environment, Conservation and Parks

Pest Control Products Act and regulations

Health Canada's Pest Management Regulatory Agency (PMRA)

- * **Forestry Exterminators License**
- * **Pesticide Labeled for Forestry**

- * **Additional FSC requirements :**



BUCKTHORN CONTROL

Foliar Spraying

Glyphosate

For buckthorn up to 3 m

Timing September to November

1-2% as per label



BUCKTHORN CONTROL

Basal Bark Spraying

Premixed with mineral oil

For buckthorn over 2.5 m

Cut stumps

Timing fall to winter



BUCKTHORN CONTROL

Equipment Scaled to Operation



BUCKTHORN CONTROL in Plantations



BUCKTHORN CONTROL in Plantations



BUCKTHORN CONTROL in Plantations



BUCKTHORN CONTROL

Roadside

Mowing

Brush saw

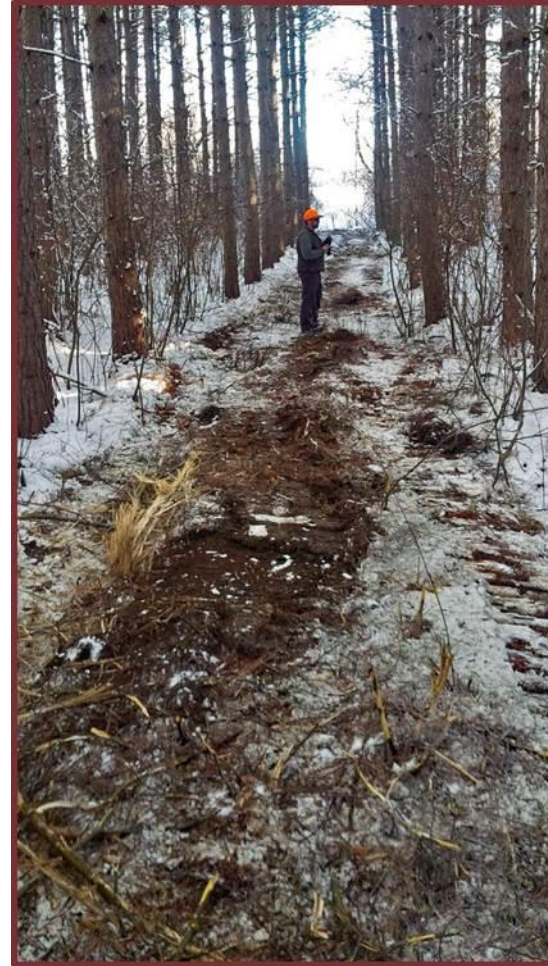
Stump spraying



BUCKTHORN CONTROL Trial



BUCKTHORN CONTROL Trial



BUCKTHORN CONTROL Trial



BUCKTHORN TENDING TRIAL

Trial



September 12, 2017

BUCKTHORN TENDING TRIAL

Trial



BUCKTHORN TENDING TRIAL

Trial



BUCKTHORN CONTROL Trial

Basal Bark
Application the
following year to
taller trees



BUCKTHORN CONTROL

Our Conclusions

- * Foliar Spraying with Glyphosate most economical and effective for buckthorn up to 3m
- * Garlon RTU most effective on buckthorn over 3m or on cut stumps
- * buckthorn control is only temporary

BUCKTHORN CONTROL

Thank You

Rob Ross
rob.ross@ucfg.on.ca
(613) 342-3840 ext 2417